



RANGES

NJR-2B24MG-36

NJR-2B24CB-36

NJR-36C-36

Features

- Stainless steel front, back riser, & lift off shelf
- 30,000 BTU top burner (each), 30,000 BTU Oven, 70,000 BTU griddle
70,000 BTU charbroiler, (36C-36, 105,000 BTU charbroiler).
- Oven thermostat adjustable from 200°F—500°F
- 12" x 12" Cast iron grates
- Robust 1" adjustable legs match KONA Fryer legs
- 3 position oven rack; 2 racks per oven
- Oven cavity 26"x22.5"x13 3/4"
- Full pull-out crumb tray
- Oven interior door, sides, hearth are porcelain coated
- Available in Natural gas(NG) or Liquid propane(LP).**
A conversion kit is supplied with each unit



NJR-2B24MG-36



NJR-2B24CB-36



NJR-36C-36

GAS REQUIREMENTS

- Natural Gas or Liquid Propane (LP) Gas main supply required
- A conversion kit is supplied with each unit. In order to avoid any warranty issues, conversion of your unit must be completed by an authorized Kona service agent
- 3/4" NPT gas connection
- 30,000 BTU's per burner
- One pilot light per burner
- Natural gas 4" W.C., LP gas 10" W.C.

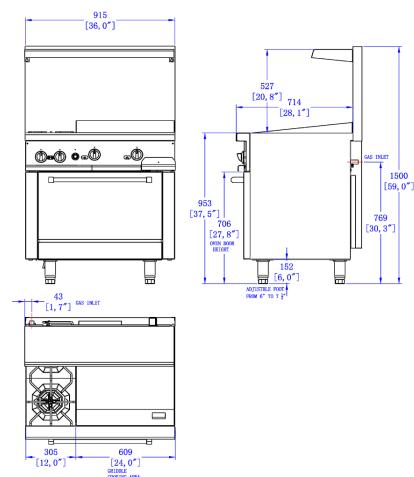


RANGES

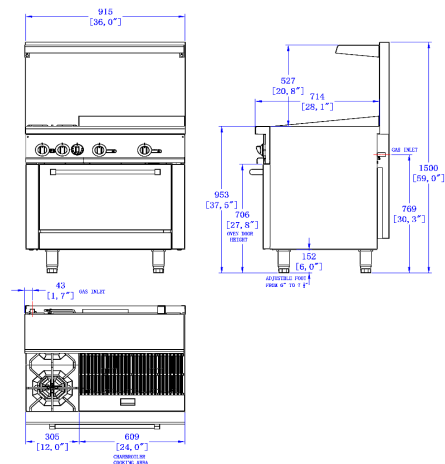


Dimensions in inches

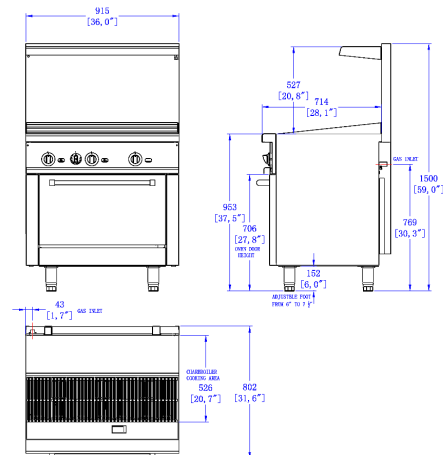
NJR-24MG-36



NJR-24CB-36



NJR-36C-36



Specifications

Model	Description	Total BTU	Overall Dimensions	Weight	Shipping Dimensions	Shipping Weight
NJR-2B-24MG-36	(2) Burners	153,000 NG	36"W x 31.4"D x 60"H	418 lbs	39.4"W x 36.6"D x 46.9"H	527 lbs
		136,000 LP	(91cm x 80cm x 152.0cm)	(189 kg)	(100cm x 93cm x 119cm)	(239kg)
NJR-2B-24CB-36	(2) Burners	163,000 NG	35.9"W x 31.4"D x 60."H	372 lbs	39.4"W x 36.6"D x 46.9"H	484 lbs
		152,000 LP	(91cm x 80cm x 152.0cm)	(169kg)	(100cm x 93cm x 119cm)	(220kg)
NJR-36C-36		138,000 NG	36"W x 31.4"D x 60"H	379 lbs	39.4"W x 36.6"D x 46.9"H	488 lbs
		133,000 LP	(91cm x 80cm x 152.0cm)	(172kg)	(100cm x 93cm x 119cm)	(222kg)